

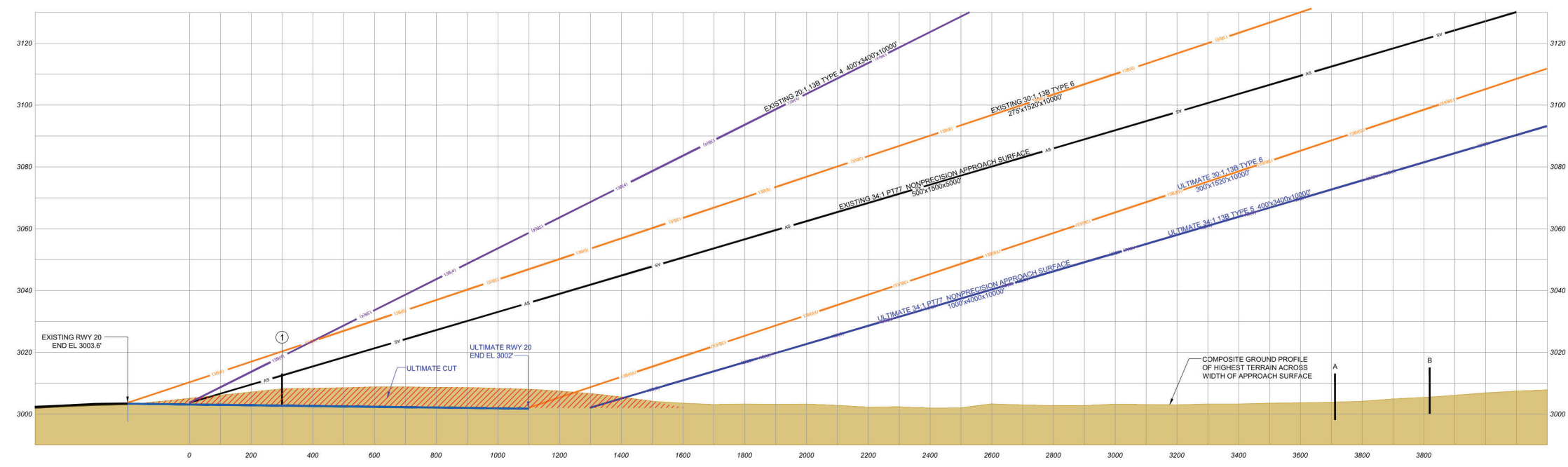
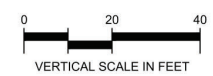
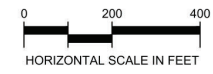
ID	Feature	Ground Elevation (ft. msl.)	Adjustment Height (ft.)	Top Elevation (ft. msl.)	Clearance Value (ft.)
A	Dawn Ave	2,998.06	15.00	3,013.06	83.04
B	Dawn Ave	3,000.03	15.00	3,015.03	107.97

- GENERAL NOTES:**
- HORIZONTAL DATUM: NORTH AMERICAN DATUM 1983 - NAD83; VERTICAL DATUM: NORTH AMERICAN DATUM 1988 - NAVD88.
 - NO SURVEY WAS CONDUCTED FOR THIS PROJECT. EXISTING RUNWAY END COORDINATES AND AIRPORT ELEVATION ARE FROM ADIP.FAA.GOV.
 - THIS AIRSPACE WAS ANALYZED AGAINST OBSTRUCTION POINTS PUBLISHED BY ADIP.FAA.GOV.
 - GROUND CONTOURS, ROAD INTERSECTION GROUND ELEVATIONS, AND GROUND PROFILE TAKEN FROM USGS 1/3 ARC SECOND PUBLISHED AUGUST 19, 2022.
 - AERIAL IMAGERY USED IN THIS AIRPORT LAYOUT PLAN ORIGINATES FROM AND DISTRIBUTED TO AFFILIATES BY AIRBUS DEFENSE AND SPACE (AIRBUS DS) 2023.
 - ALL ELEVATIONS IN MSL FEET.

- LEGEND**
- SIGNIFICANT OBJECT
 - OBSTRUCTION
 - | ROAD PROFILE VIEW

ID	Feature	Source	ADIP ID	FAA Study #	Ground Elevation (ft. msl.)	Top Elevation (ft. msl.)	Penetration Value				Remediation	
							Existing Part 77 Approach (34:1 Slope)	Ultimate Part 77 Approach (34:1 Slope)	Existing 13B #3 (20:1 Slope)	Ultimate 13B #5 (34:1 Slope)		
1	Airport Access Road	adip.faa.gov	48-122958	N/A	3,000.00	13.00	3,013.00	5.64	N/A	3.00	N/A	To be Rerouted in Ultimate Condition

Magnetic Declination
 05° 50' East ±0°21'
 Annual Rate of Change
 00° 07' West
 (Source: NOAA, NCEI, 10/2022)



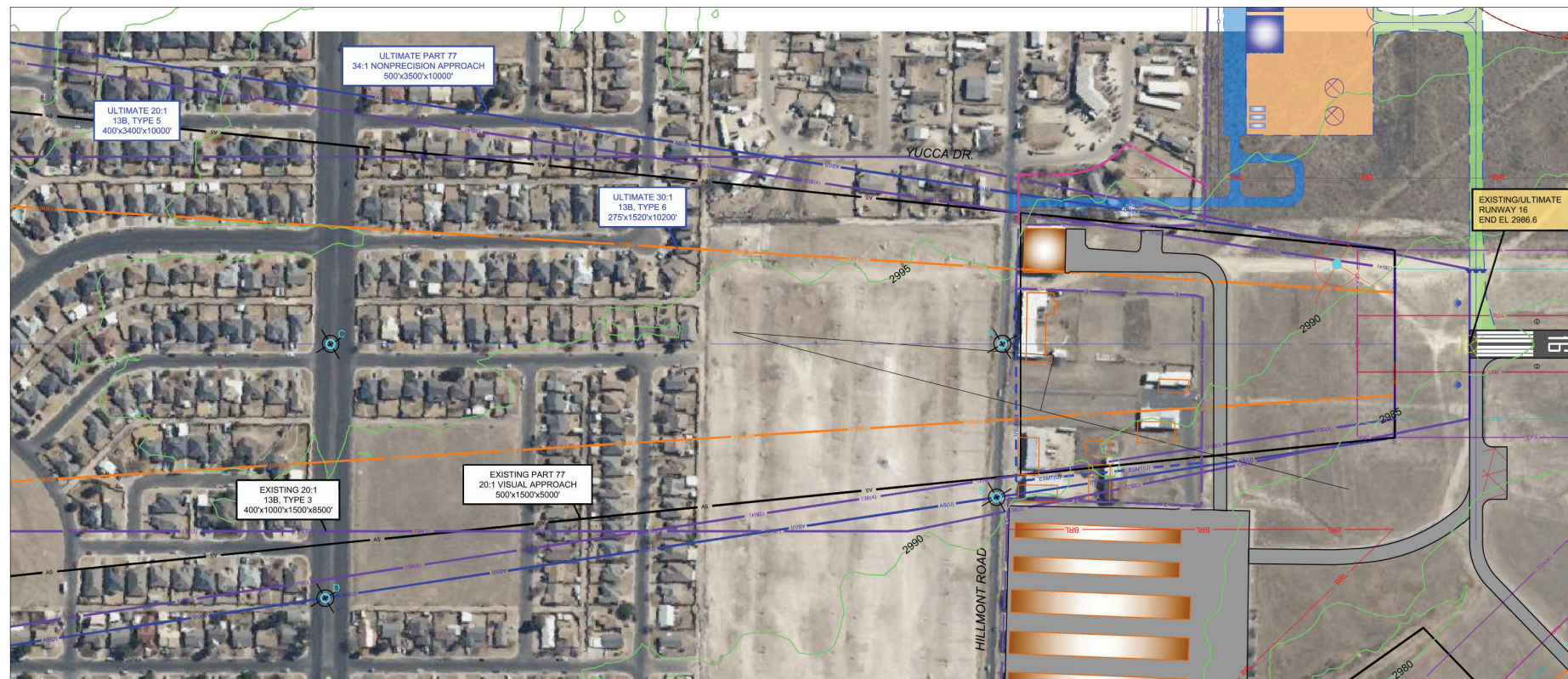
<p>TEXAS DEPARTMENT OF TRANSPORTATION AVIATION DIVISION</p> <p>ALP APPROVED ACCORDING TO FAA AC 150/5300-13A PLUS THE REQUIREMENTS OF A FAVORABLE ENVIRONMENTAL FINDING AND FAA NIA STUDY PRIOR TO THE START OF ANY LAND ACQUISITION OR CONSTRUCTION ON AIRPORT PROPERTY.</p> <p>COPYRIGHT 2017 TXDOT AVIATION DIVISION. ALL RIGHTS RESERVED.</p>	<p>AIRPORT SPONSOR</p> <p>CURRENT AND FUTURE DEVELOPMENT DEPICTED ON THIS ALP IS APPROVED AND SUPPORTED BY AIRPORT SPONSOR.</p> <p>SPONSOR ACKNOWLEDGES APPROVAL OF ALP BY TXDOT DOES NOT CONSTITUTE A COMMITMENT TO FUNDING.</p> <p style="text-align: center; font-size: 24pt; font-weight: bold;">DRAFT</p>
<p>PREPARED BY: 12920 Metcalf Avenue Suite 200 Overland Park, KS 66219 (816) 524-3500, Fax (816) 524-2575 Coffman Phoenix Office: 4835 E. Cactus Road Suite 235 Scottsdale, AZ 85254 (602) 993-6999, Fax (7196)</p>	<p>DATE</p> <p>SIGNATURE</p> <p>TITLE, AIRPORT SPONSOR'S REPRESENTATIVE</p> <p>C. BURKS DESIGNED BY DATE</p> <p>JUNE 2023</p> <p>D. PRZYBYCIEN DRAWN BY DATE</p> <p>JUNE 2023</p>

**INNER PORTION OF THE APPROACH SURFACE
 DRAWING RUNWAY 20
 ODESSA-SCHLEMMEYER FIELD
 ODESSA, TEXAS**

SHEET 11 OF 20

NO.	REVISIONS	BY	CHK'D	DATE

Coffman Associates C:\Users\adrian\Coffman Associates Inc\Coffman-ag_CAD\NIP\Odeessa (ODD)_22\ALP\6-13 ODD IPASD.dwg Printed Date: 6/22/23 07:56:54 AM diana

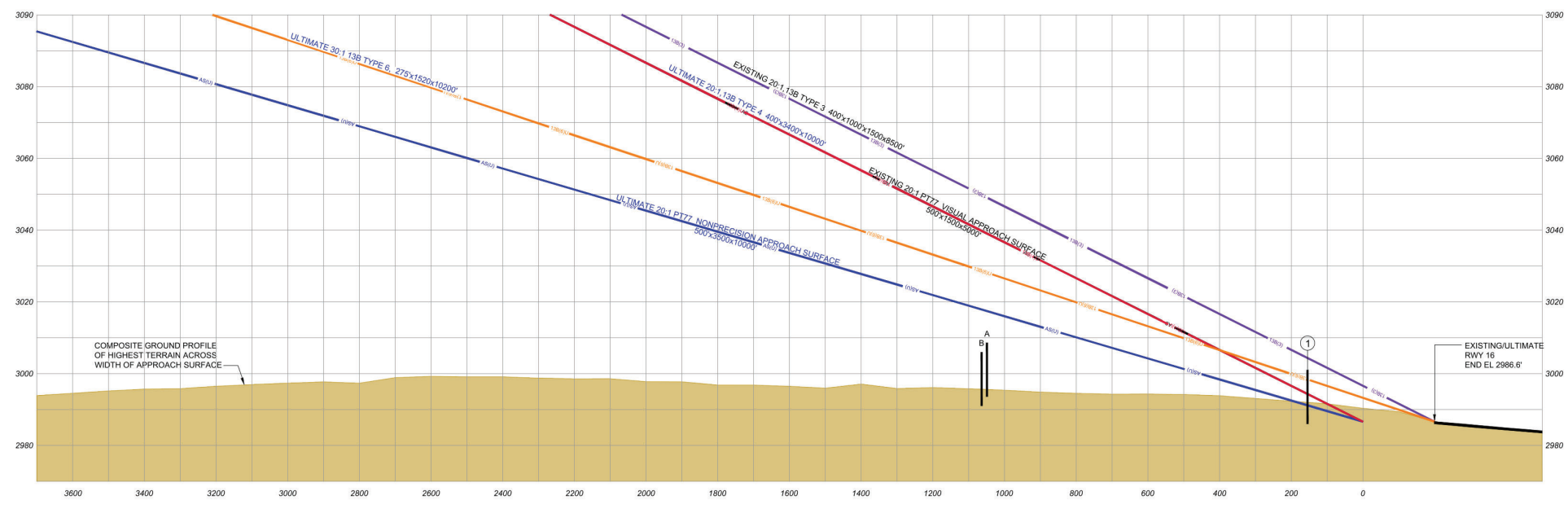


Runway 16 Inner-Approach Road Points					
ID	Feature	Ground Elevation (ft. msl.)	Adjustment Height (ft.)	Top Elevation (ft. msl.)	Clearance Value (ft.) Ultimate Part 77 Approach (34:1 Slope)
A	Hillmont	2,993.60	15.00	3,008.60	8.84
B	Hillmont	2,990.97	15.00	3,005.97	11.89
C	E 87th St	2,996.06	15.00	3,011.00	59.19
D	E 87th St	2,992.04	15.00	3,007.04	63.62

- GENERAL NOTES:**
- HORIZONTAL DATUM: NORTH AMERICAN DATUM 1983 - NAD83; VERTICAL DATUM: NORTH AMERICAN DATUM 1988 - NAVD88.
 - NO SURVEY WAS CONDUCTED FOR THIS PROJECT. EXISTING RUNWAY END COORDINATES AND AIRPORT ELEVATION ARE FROM ADIP.FAA.GOV.
 - THIS AIRSPACE WAS ANALYZED AGAINST OBSTRUCTION POINTS PUBLISHED BY ADIP.FAA.GOV.
 - GROUND CONTOURS, ROAD INTERSECTION GROUND ELEVATIONS, AND GROUND PROFILE TAKEN FROM USGS 1/3 ARC SECOND PUBLISHED AUGUST 19, 2022.
 - AERIAL IMAGERY USED IN THIS AIRPORT LAYOUT PLAN ORIGINATES FROM AND DISTRIBUTED TO AFFILIATES BY AIRBUS DEFENSE AND SPACE (AIRBUS DS) 2023.
 - ALL ELEVATIONS IN MSL FEET.

- LEGEND**
- SIGNIFICANT OBJECT
 - OBSTRUCTION
 - ROAD PROFILE VIEW

Runway 16 Inner Approach Obstructions												
ID	Feature	Source	ADIP ID	FAA Study #	Ground Elevation (ft. msl.)	AGL (ft.)	Top Elevation (ft. msl.)	Penetration Value				Remediation
								Existing Part 77 Approach (20:1 Slope)	Ultimate Part 77 Approach (34:1 Slope)	Existing 13B #3 (20:1 Slope)	Ultimate 13B #4 (20:1 Slope)	
1	Airport Access Road	adip.faa.gov	48-038885	N/A	2,990.00	11.00	3,001.00	6.67	9.85	6.67	6.67	To Remain - Airport Controlled Road



Magnetic Declination
05° 50' East ±0° 21'
Annual Rate of Change
00° 07' West
(Source: NOAA, NCEI, 10/2022)

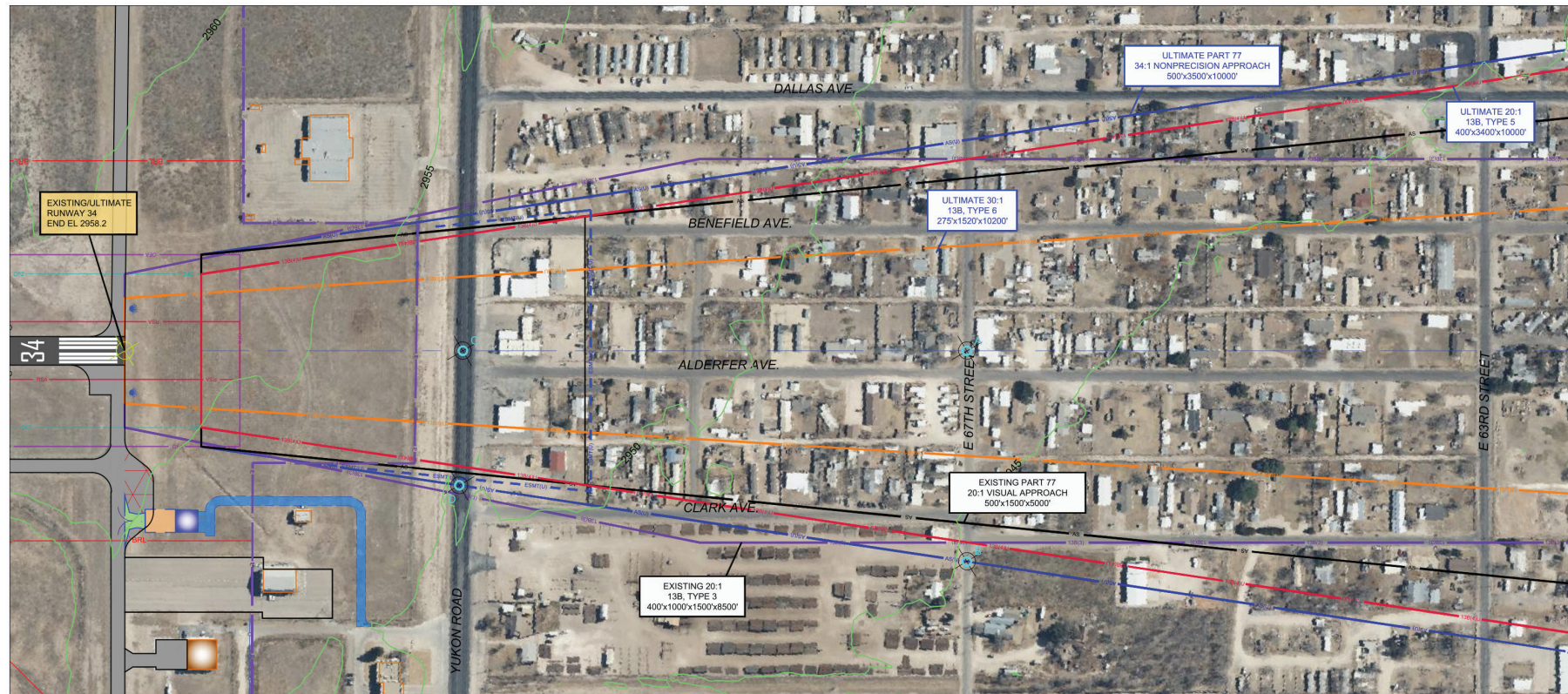
HORIZONTAL SCALE IN FEET

VERTICAL SCALE IN FEET

TEXAS DEPARTMENT OF TRANSPORTATION AVIATION DIVISION ALP APPROVED ACCORDING TO FAA AC 150/5300-13A PLUS THE REQUIREMENTS OF A FAVORABLE ENVIRONMENTAL FINDING AND FAA NHA STUDY PRIOR TO THE START OF ANY LAND ACQUISITION OR CONSTRUCTION ON AIRPORT PROPERTY. COPYRIGHT 2017 TXDOT AVIATION DIVISION. ALL RIGHTS RESERVED.		AIRPORT SPONSOR CURRENT AND FUTURE DEVELOPMENT DEPICTED ON THIS ALP IS APPROVED AND SUPPORTED BY AIRPORT SPONSOR. SPONSOR ACKNOWLEDGES APPROVAL OF ALP BY TXDOT DOES NOT CONSTITUTE A COMMITMENT TO FUNDING.	
Dan Hamon, DIRECTOR, AVIATION DIVISION DATE: _____		SIGNATURE: _____ DATE: _____	
PREPARED BY: 12920 Metcalf Avenue Suite 200 Overland Park, KS 66213 (816) 524-3500, Fax (816) 524-2575 Coffman Phoenix Office: 4835 E. Cactus Road Suite 235 Scottsdale, AZ 85254 (602) 993-6999, Fax (7196)		 C. BURKS DESIGNED BY: _____ DATE: JUNE 2023 D. PRZYBYCIEN DRAWN BY: _____ DATE: JUNE 2023	
INNER PORTION OF THE APPROACH SURFACE DRAWING RUNWAY 16 ODESSA-SCHLEMAYER FIELD ODESSA, TEXAS			
 Aviation Division SHEET 12 OF 20			

NO.	REVISIONS	BY	CHK'D	DATE

Coffman Associates C:\Users\dhamon\Coffman Associates Inc\Coffman_ap_CADD\Projects\13 ODO\13ASD.dwg Printed Date: 6/21/23 09:37:39 AM dhamon



Runway 34 Inner-Approach Road Points					
ID	Feature	Ground Elevation (ft. msl.)	Adjustment Height (ft.)	Top Elevation (ft. msl.)	Clearance Value (ft.) Ultimate Part 77 Approach (34:1 Slope)
A	67th St	2,946.53	15.00	2,961.53	14.38
B	67th St	2,944.79	15.00	2,959.79	27.78
C	Yukon	2,952.32	15.00	2,967.32	36.42
D	Yukon	2,950.59	15.00	2,965.59	45.51

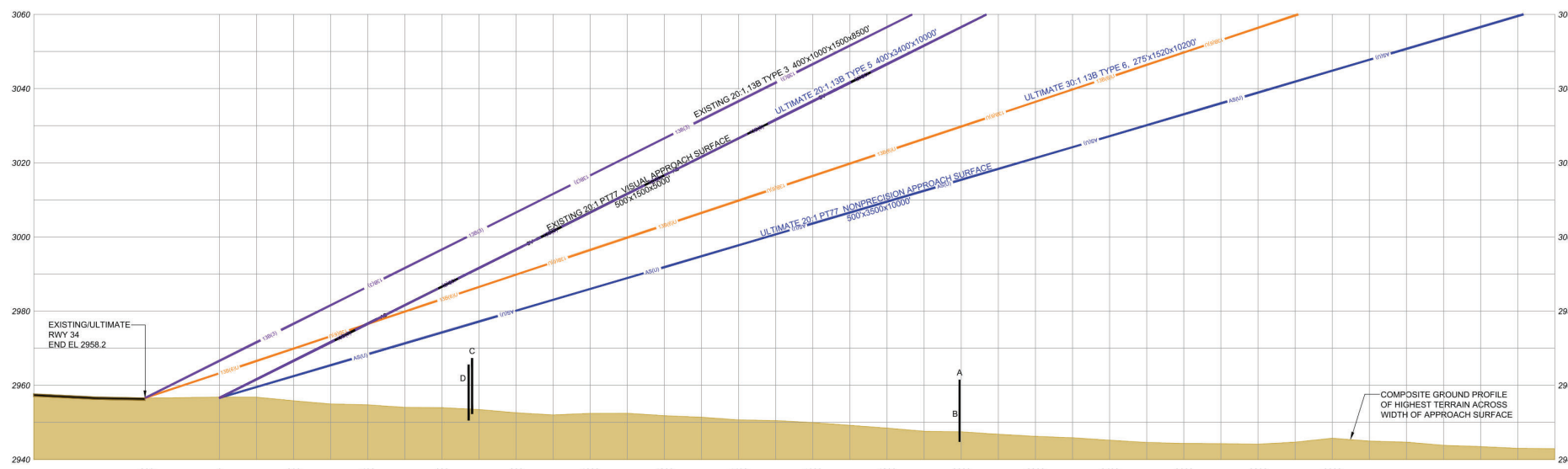
GENERAL NOTES:

- HORIZONTAL DATUM: NORTH AMERICAN DATUM 1983 - NAD83;
VERTICAL DATUM: NORTH AMERICAN DATUM 1988 - NAVD88.
- NO SURVEY WAS CONDUCTED FOR THIS PROJECT. EXISTING RUNWAY END COORDINATES AND AIRPORT ELEVATION ARE FROM ADIP.FAA.GOV.
- THIS AIRSPACE WAS ANALYZED AGAINST OBSTRUCTION POINTS PUBLISHED BY ADIP.FAA.GOV.
- GROUND CONTOURS, ROAD INTERSECTION GROUND ELEVATIONS, AND GROUND PROFILE TAKEN FROM USGS 1/3 ARC SECOND PUBLISHED AUGUST 19, 2022.
- AERIAL IMAGERY USED IN THIS AIRPORT LAYOUT PLAN ORIGINATES FROM AND DISTRIBUTED TO AFFILIATES BY AIRBUS DEFENSE AND SPACE (AIRBUS DS) 2023.
- ALL ELEVATIONS IN MSL FEET.

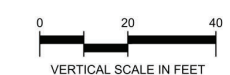
LEGEND

- SIGNIFICANT OBJECT
- ROAD PROFILE VIEW

Runway 34 Inner Approach Obstructions											
ID	Feature	Source	ADIP ID	FAA Study #	Ground Elevation (ft. msl.)	Top Elevation (ft. msl.)	Penetration Value				Remediation
							Existing Part 77 Approach (20:1 Slope)	Ultimate Part 77 Approach (34:1 Slope)	Existing 13B #3 (20:1 Slope)	Ultimate 13B #4 (20:1 Slope)	
No Obstructions											



Magnetic Declination
05° 50' East ±0'21"
Annual Rate of Change
00° 07' West
(Source: NOAA, NCEI, 10/2022)



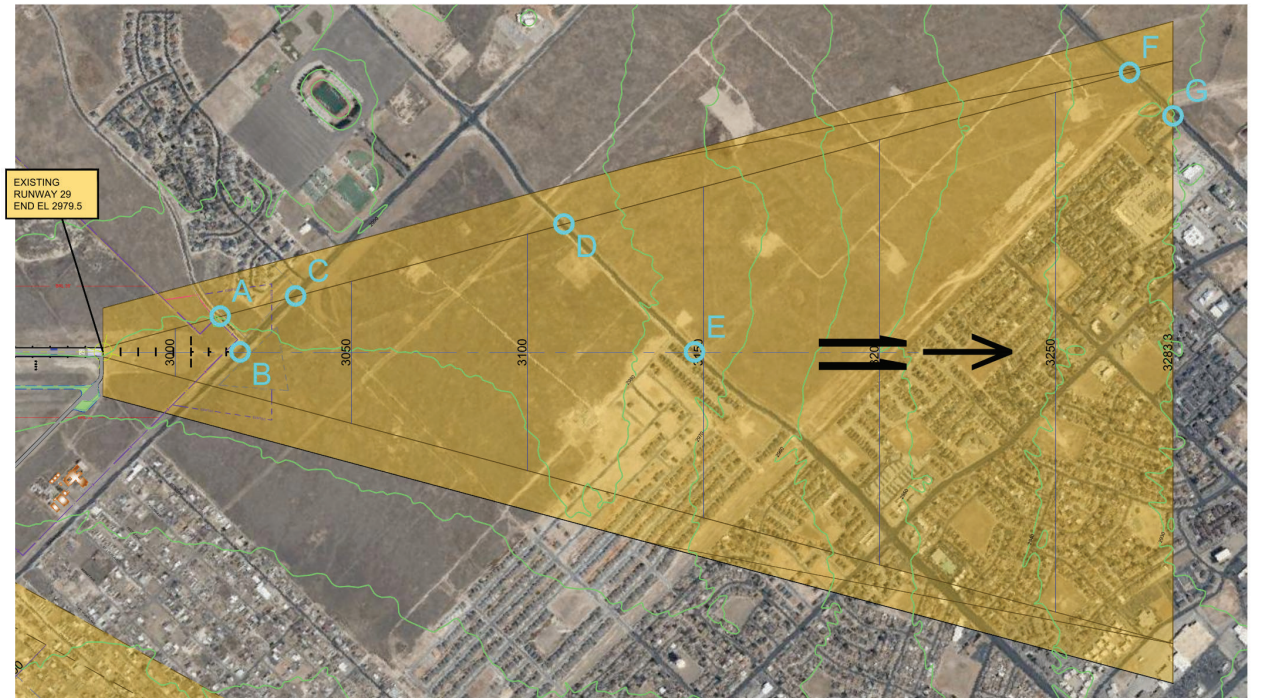
<p>TEXAS DEPARTMENT OF TRANSPORTATION AVIATION DIVISION</p> <p>ALP APPROVED ACCORDING TO FAA AC 150/5300-13A PLUS THE REQUIREMENTS OF A FAVORABLE ENVIRONMENTAL FINDING AND FAA NIA STUDY PRIOR TO THE START OF ANY LAND ACQUISITION OR CONSTRUCTION ON AIRPORT PROPERTY.</p> <p>COPYRIGHT 2017 TXDOT AVIATION DIVISION. ALL RIGHTS RESERVED.</p>	<p>AIRPORT SPONSOR</p> <p>CURRENT AND FUTURE DEVELOPMENT DEPICTED ON THIS ALP IS APPROVED AND SUPPORTED BY AIRPORT SPONSOR.</p> <p>SPONSOR ACKNOWLEDGES APPROVAL OF ALP BY TXDOT DOES NOT CONSTITUTE A COMMITMENT TO FUNDING.</p> <p style="text-align: center; font-size: 24pt; font-weight: bold;">DRAFT</p>
<p>Prepared by: 12920 Metcalf Avenue Suite 200 Overland Park, KS 66213 (816) 524-3500, Fax (816) 524-2575 Coffman Phoenix Office: 4835 E. Cactus Road Suite 235 Scottsdale, AZ 85254 (602) 993-6999, Fax (7196)</p>	<p>C. BURKS DESIGNED BY DATE: JUNE 2023</p> <p>D. PRZYBYCIEN DRAWN BY DATE: JUNE 2023</p>

**INNER PORTION OF THE APPROACH SURFACE
DRAWING RUNWAY 34
ODESSA-SCHLEMMEYER FIELD
ODESSA, TEXAS**

NO.	REVISIONS	BY	CHK'D	DATE

SHEET 13 OF 20

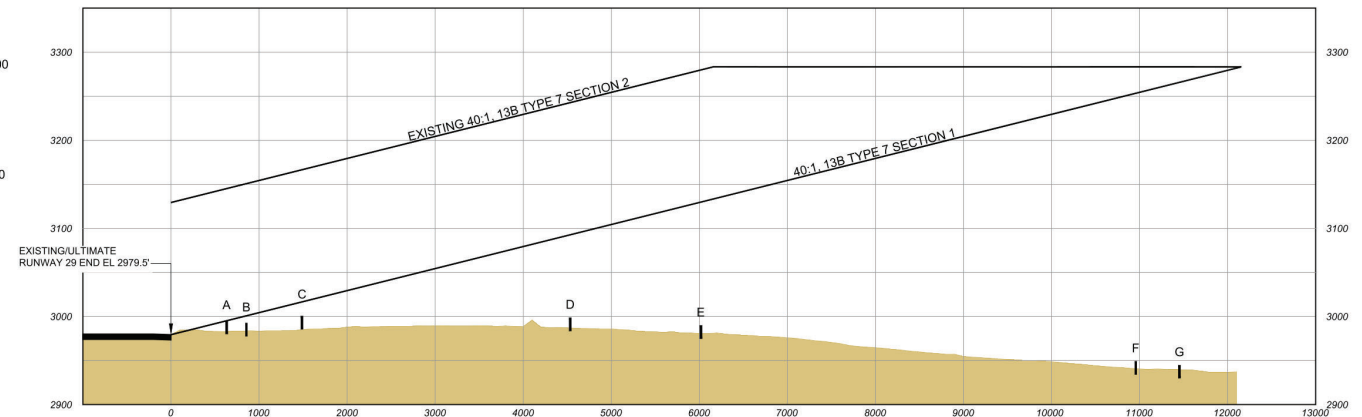
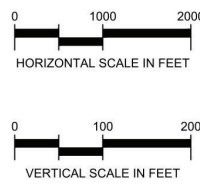
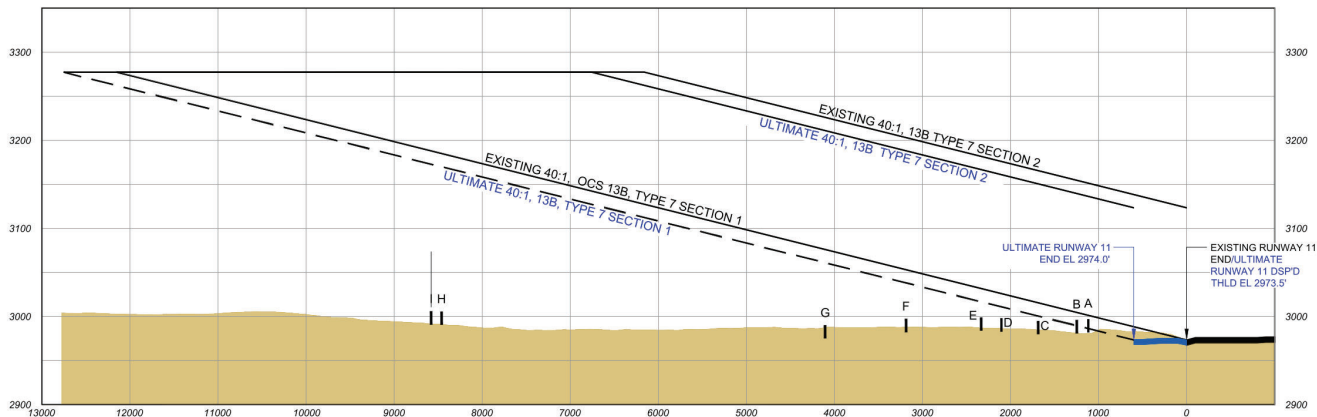
Coffman Associates C:\Users\adrian\Coffman Associates Inc\Coffman - ap_CAD\MP\Odessa (OOD)_22\ALP\13 OOD IPASD.dwg Printed Date: 6/21/23 09:38:15 AM diana



Magnetic Declination
05° 50' East ±0'21"
Annual Rate of Change
00° 07' West
(Source: NOAA, NCEI, 10/2022)

Runway 11 End Departure Obstructions										
ID	Feature	Source	ADIP ID	FAA Study #	Ground Elevation (ft. msl.)	AGL (ft.)	Top Elevation (ft. msl.)	Penetration Value (ft.)		Remediation
								Existing	Ultimate	
No Obstructions										

Runway 29 End Departure Obstructions										
ID	Feature	Source	ADIP ID	FAA Study #	Ground Elevation (ft. msl.)	AGL (ft.)	Top Elevation (ft. msl.)	Penetration Value (ft.)		Remediation
								Existing	Ultimate	
No Obstructions										



Runway 11 End Departure Road Points						
ID	Feature	Ground Elevation (ft. msl.)	Adjustment Height (ft.)	Top Elevation (ft. msl.)	Clearance Value (ft.)	
					Existing Departure (40:1 Slope)	Ultimate Departure (40:1 Slope)
A	Hillmont	2,982.05	15.00	2,997.05	22.02	N/A
B	Hillmont	2,981.05	15.00	2,996.05	N/A	11.29
C	Hillmont	2,980.18	15.00	2,995.18	38.09	23.09
D	385 Service Rd	2,983.19	15.00	2,998.19	45.56	30.54
E	385 Service Rd	2,984.05	15.00	2,999.05	50.42	N/A
F	87th St	2,982.28	15.00	2,997.28	N/A	58.50
G	87th St	2,975.24	15.00	2,990.24	103.53	88.53
H	N County Rd W	2,990.82	15.00	3,005.82	196.87	181.87
I	N County Rd W	2,991.00	15.00	3,006.00	N/A	184.63

Runway 29 End Departure Road Points						
ID	Feature	Ground Elevation (ft. msl.)	Adjustment Height (ft.)	Top Elevation (ft. msl.)	Clearance Value (ft.)	
					Existing Departure (40:1 Slope)	Ultimate Departure (40:1 Slope)
A	Dawn	2,980.21	15.00	2,995.21	17.58	
B	Yukon	2,977.82	15.00	2,992.82	25.60	
C	Yukon	2,985.53	15.00	3,000.53	33.67	
D	Grandview	2,983.84	15.00	2,998.84	111.53	
E	Grandview	2,974.90	15.00	2,989.90	157.55	
F	John Ben Shepperd	2,934.35	15.00	2,949.35	321.58	
G	John Ben Shepperd	2,929.92	15.00	2,944.92	338.38	

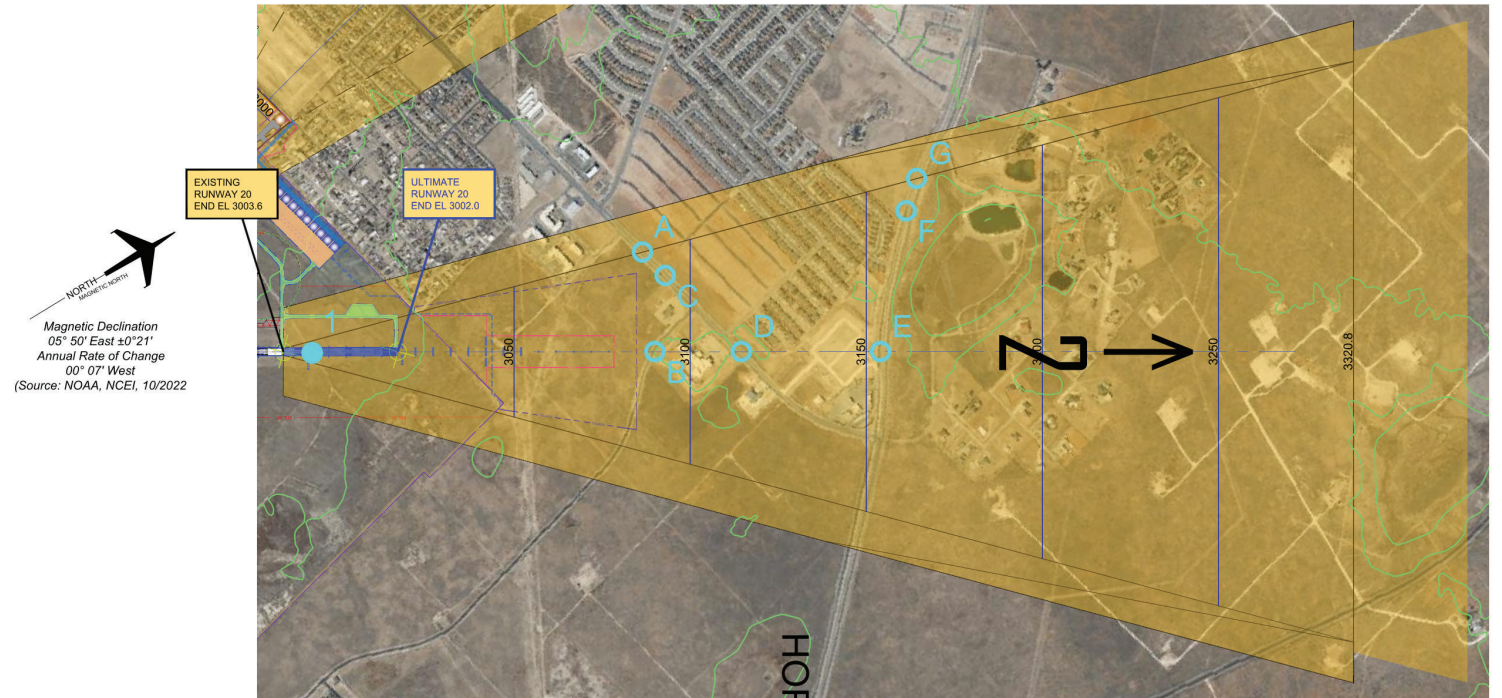
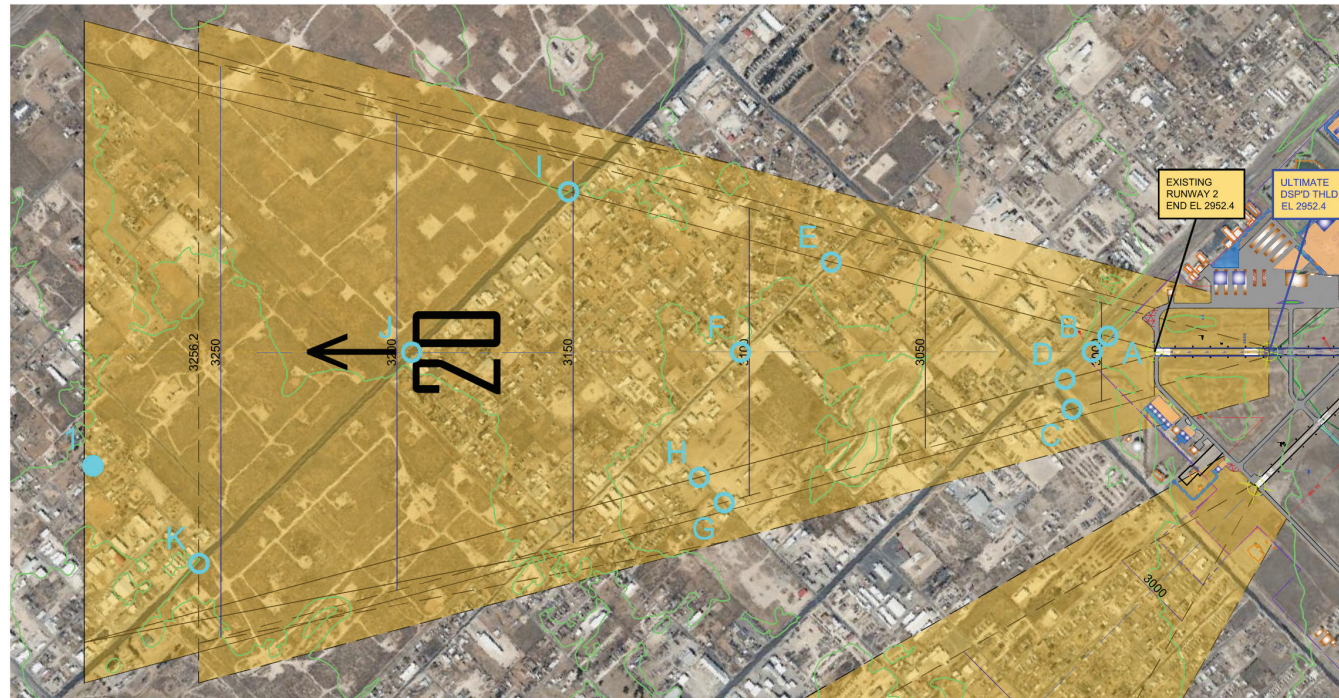
GENERAL NOTES:

- HORIZONTAL DATUM: NORTH AMERICAN DATUM 1983 - NAD83;
VERTICAL DATUM: NORTH AMERICAN DATUM 1988 - NAVD88
- NO SURVEY WAS CONDUCTED FOR THIS PROJECT. EXISTING RUNWAY END COORDINATES AND AIRPORT ELEVATION ARE FROM ADIP.FAA.GOV.
- THIS AIRSPACE WAS ANALYZED AGAINST OBSTRUCTION POINTS PUBLISHED BY ADIP.FAA.GOV.
- GROUND CONTOURS, ROAD INTERSECTION GROUND ELEVATIONS, AND GROUND PROFILE TAKEN FROM USGS 1/3 ARC SECOND PUBLISHED AUGUST 19, 2022.
- AERIAL IMAGERY USED IN THIS AIRPORT LAYOUT PLAN ORIGINATES FROM AND DISTRIBUTED TO AFFILIATES BY AIRBUS DEFENSE AND SPACE (AIRBUS DS) 2023.
- ALL ELEVATIONS IN MSL FEET.

LEGEND	
	EXISTING 13B OBSTACLE CLEARANCE SURFACE
	ULTIMATE 13B OBSTACLE CLEARANCE SURFACE
	EXISTING PROPERTY BOUNDARY
	ULTIMATE PROPERTY BOUNDARY
	SIGNIFICANT OBJECT IDENTIFIER
	GROUND CONTOUR

NO.	REVISIONS	BY	CHK'D	DATE

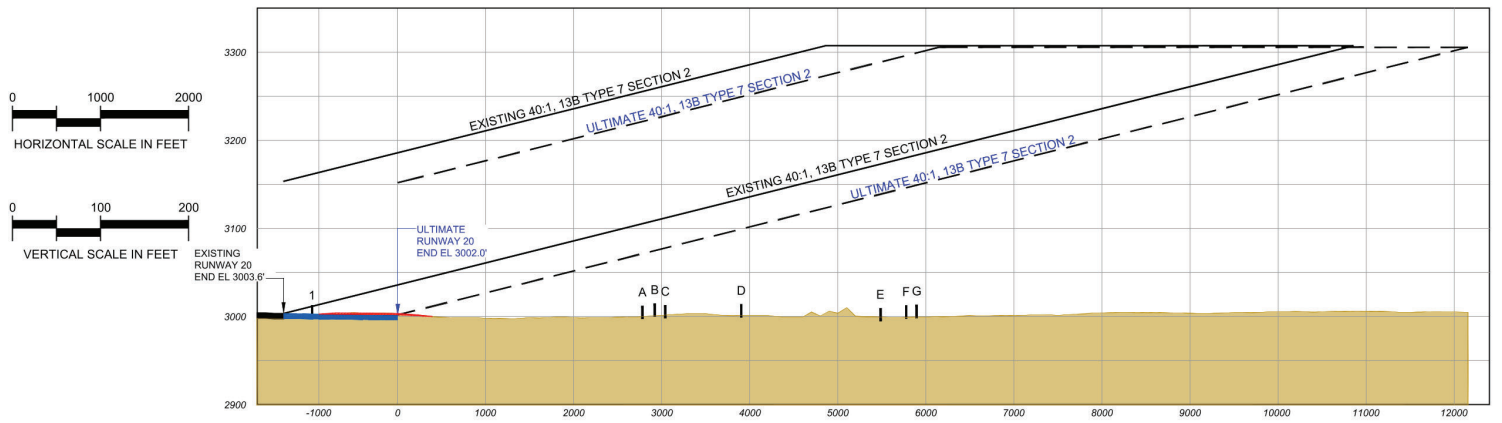
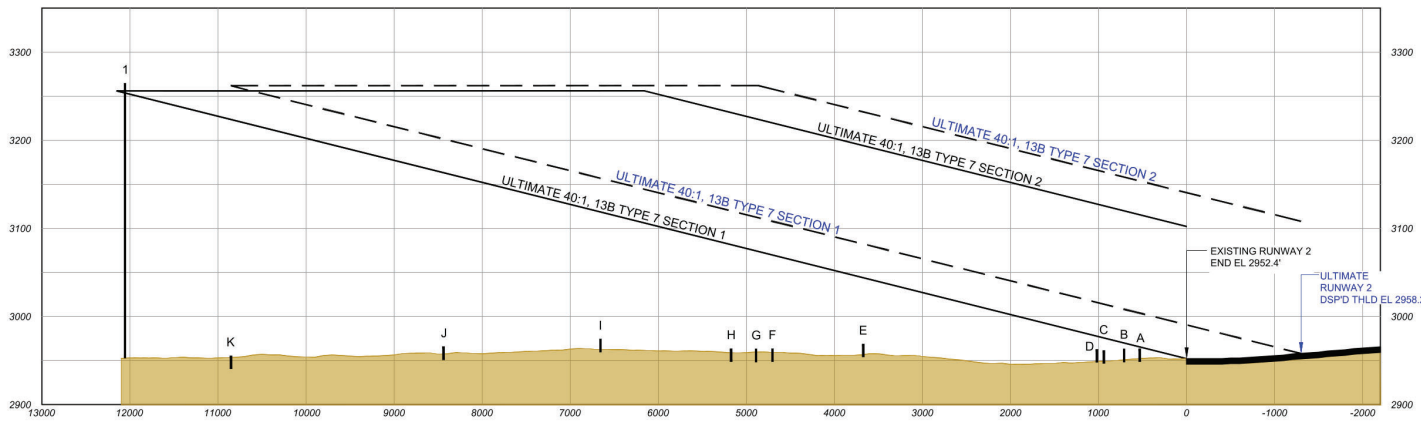
TEXAS DEPARTMENT OF TRANSPORTATION AVIATION DIVISION <small>ALP APPROVED ACCORDING TO FAA AC 150/5300-13A PLUS THE REQUIREMENTS OF A FAVORABLE ENVIRONMENTAL FINDING AND FAA NHA STUDY PRIOR TO THE START OF ANY LAND ACQUISITION OR CONSTRUCTION ON AIRPORT PROPERTY.</small> <small>COPYRIGHT 2017 TXDOT AVIATION DIVISION. ALL RIGHTS RESERVED.</small>		AIRPORT SPONSOR <small>CURRENT AND FUTURE DEVELOPMENT DEPICTED ON THIS ALP IS APPROVED AND SUPPORTED BY AIRPORT SPONSOR. SPONSOR ACKNOWLEDGES APPROVAL OF ALP BY TXDOT DOES NOT CONSTITUTE A COMMITMENT TO FUNDING.</small>	
<small>Don Harmon, DIRECTOR, AVIATION DIVISION</small>		<small>SIGNATURE</small>	
<small>DATE</small>		<small>DATE</small>	
<small>TITLE, AIRPORT SPONSOR'S REPRESENTATIVE</small>		<small>TITLE, AIRPORT SPONSOR'S REPRESENTATIVE</small>	
PREPARED BY: 12920 Metcalf Avenue Suite 200 Overland Park, KS 66213 (816) 524-3500, Fax (816) 524-2575 Coffman Phoenix Office: 4835 E. Cactus Road Suite 235 Scottsdale, AZ 85254 (602) 993-6999, Fax (719)		 www.coffmanassociates.com	
<small>C. BURKS</small> <small>DESIGNED BY</small>		<small>JUNE 2023</small> <small>DATE</small>	
<small>D. PRZYBYCIEŃ</small> <small>DRAWN BY</small>		<small>JUNE 2023</small> <small>DATE</small>	
RUNWAY 11-29 DEPARTURE SURFACE DRAWING ODESSA-SCHLEMMEYER FIELD ODESSA, TEXAS			
			<small>Aviation Division</small> <small>SHEET 14 OF 20</small>



NORTH
Magnetic Declination
05° 50' East ±0°21'
Annual Rate of Change
00° 07' West
(Source: NOAA, NCEI, 10/2022)

Runway 2 End Departure Obstructions										
ID	Feature	Source	ADIP ID	FAA Study #	Ground Elevation (ft. msl.)	AGL (ft.)	Top Elevation (ft. msl.)	Penetration Value (ft.) Existing	Ultimate	Remediation
1	Tower	adip.faa.gov	48-004149	N/A	2,947.00	318.00	3,265.00	11.14	N/A	To Remain - Tower has Red Obstruction Lighting

Runway 20 End Departure Obstructions										
ID	Feature	Source	ADIP ID	FAA Study #	Ground Elevation (ft. msl.)	AGL (ft.)	Top Elevation (ft. msl.)	Penetration Value (ft.) Existing	Ultimate	Remediation
1	Airport Access Rd	adip.faa.gov	48-122958	N/A	3,000.00	13.00	3,013.00	1.20	N/A	To Remain - Airport Controlled. Will be relocated in ultimate condition



0 1000 2000
HORIZONTAL SCALE IN FEET
0 100 200
VERTICAL SCALE IN FEET

LEGEND	
	EXISTING 13B OBSTACLE CLEARANCE SURFACE
	ULTIMATE 13B OBSTACLE CLEARANCE SURFACE
	EXISTING PROPERTY BOUNDARY
	ULTIMATE PROPERTY BOUNDARY
	SIGNIFICANT OBJECT IDENTIFIER
	OBSTRUCTION IDENTIFIER
	GROUND CONTOUR

Runway 2 End Departure Road Points						
ID	Feature	Ground Elevation (ft. msl.)	Adjustment Height (ft.)	Top Elevation (ft. msl.)	Clearance Value (ft.)	
					Existing Departure (40:1 Slope)	Ultimate Departure (40:1 Slope)
A	385 Service Rd	2,948.80	15.00	2,963.80	1.88	N/A
B	385 Service Rd	2,948.49	15.00	2,963.49	6.65	44.86
C	Yukon	2,946.70	15.00	2,961.70	N/A	52.42
D	385 Service Rd	2,947.90	15.00	2,962.90	N/A	53.15
E	Golder	2,954.03	15.00	2,969.03	75.18	N/A
F	Golder	2,948.80	15.00	2,963.80	106.17	144.38
G	61st St	2,948.47	15.00	2,963.47	N/A	149.40
H	61st St	2,948.71	15.00	2,963.71	N/A	156.25
I	N County Hwy W	2,959.69	15.00	2,974.69	144.14	N/A
J	N County Hwy W	2,950.94	15.00	2,965.94	197.43	235.64
K	N County Hwy W	2,940.68	15.00	2,955.68	N/A	306.28

Runway 20 End Departure Road Points						
ID	Feature	Ground Elevation (ft. msl.)	Adjustment Height (ft.)	Top Elevation (ft. msl.)	Clearance Value (ft.)	
					Existing Departure (40:1 Slope)	Ultimate Departure (40:1 Slope)
A	87th St	2,997.30	15.00	3,012.30	93.27	N/A
B	Dawn Ave.	3,000.03	15.00	3,015.03	94.06	59.96
C	87th St	2,998.16	15.00	3,013.16	79.79	N/A
D	87th St	2,999.21	15.00	3,014.21	119.43	85.33
E	John Ben Shepperd	2,994.70	15.00	3,009.70	163.47	129.37
F	John Ben Shepperd	2,997.76	15.00	3,012.76	N/A	133.60
G	John Ben Shepperd	2,998.56	15.00	3,013.56	169.88	N/A

GENERAL NOTES:

- HORIZONTAL DATUM: NORTH AMERICAN DATUM 1983 - NAD83; VERTICAL DATUM: NORTH AMERICAN DATUM 1988 - NAVD88
- NO SURVEY WAS CONDUCTED FOR THIS PROJECT. EXISTING RUNWAY END COORDINATES AND AIRPORT ELEVATION ARE FROM ADIP.FAA.GOV.
- THIS AIRSPACE WAS ANALYZED AGAINST OBSTRUCTION POINTS PUBLISHED BY ADIP.FAA.GOV.
- GROUND CONTOURS, ROAD INTERSECTION GROUND ELEVATIONS, AND GROUND PROFILE TAKEN FROM USGS 1/3 ARC SECOND PUBLISHED AUGUST 19, 2022.
- AERIAL IMAGERY USED IN THIS AIRPORT LAYOUT PLAN ORIGINATES FROM AND DISTRIBUTED TO AFFILIATES BY AIRBUS DEFENSE AND SPACE (AIRBUS DS) 2023.
- ALL ELEVATIONS IN MSL FEET.

TEXAS DEPARTMENT OF TRANSPORTATION AVIATION DIVISION ALP APPROVED ACCORDING TO FAA AC 150/5300-13A PLUS THE REQUIREMENTS OF A FAVORABLE ENVIRONMENTAL FINDING AND FAA NHA STUDY PRIOR TO THE START OF ANY LAND ACQUISITION OR CONSTRUCTION ON AIRPORT PROPERTY. COPYRIGHT 2017 TXDOT AVIATION DIVISION. ALL RIGHTS RESERVED.		AIRPORT SPONSOR CURRENT AND FUTURE DEVELOPMENT DEPICTED ON THIS ALP IS APPROVED AND SUPPORTED BY AIRPORT SPONSOR. SPONSOR ACKNOWLEDGES APPROVAL OF ALP BY TXDOT DOES NOT CONSTITUTE A COMMITMENT TO FUNDING.	
PREPARED BY: 12920 Metcalf Avenue Suite 200 Overland Park, KS 66213 (816) 524-3500, Fax (816) 524-2575 Coffman Phoenix Office: 4835 E. Cactus Road Suite 235 Scottsdale, AZ 85254 (602) 993-6999, Fax (719)			
SHEET 15 OF 20			

NO.	REVISIONS	BY	CHK'D	DATE